

DO NOT SCALE FROM THIS PRINT

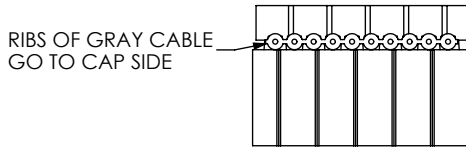
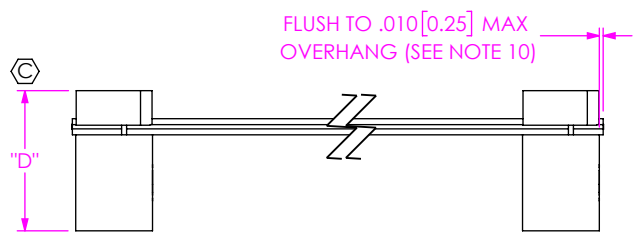
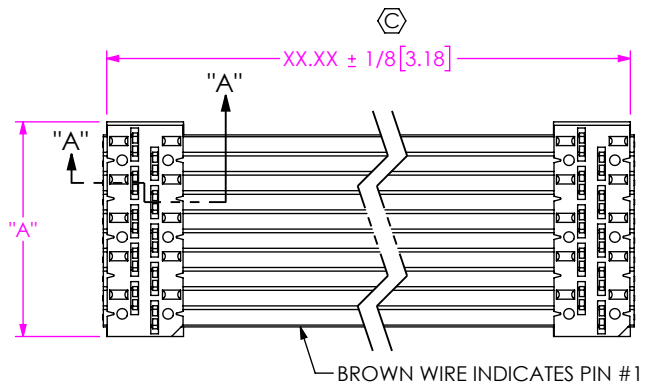
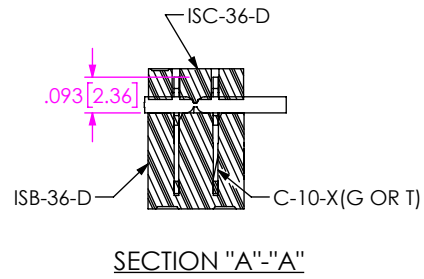


FIG 1  
IDSD-05-D-XX.XX-XXX-XXX SHOWN  
(SEE NOTE 9)



SECTION "A"-"A"

ROW SPECIFICATION

- S: SINGLE ROW
- D: DOUBLE ROW

NO. OF CONDUCTORS

(-02 THRU -36 PER ROW)  
 USE CABLE: CB-XX-28-7/36-050-C (IDSD)  
 USE CABLE: CB-XX-28-7/36-100-C (IDSS)  
 IDSD FULL STRIP: "A" = 3.650 ± .005 [92.71 ± 0.13] REF  
 CUT STRIP: "A" = 3.610 ± .005 [91.69 ± 0.13] REF  
 IDSS FULL STRIP: "A" = 3.610 ± .005 [91.69 ± 0.13] REF  
 CUT STRIP: "A" = 3.610 ± .005 [91.69 ± 0.13] REF  
 \*NOTE: STANDARD COLOR-CODED CABLE N/A FOR DOUBLE ROW 31 THRU 36 POSITION - SEE -G OPTION.

END ASSEMBLY SPECIFICATION

- S: (SINGLE) ONE IDC ASSEMBLY
- D: (DOUBLE) TWO IDC ASSEMBLYS

LENGTH OF CABLE

ALL OPTIONS THAT USE -D"XX", -B"XX", -S"XX":  
 4.00 [101.6] MINIMUM  
 ALL OTHER OPTIONS: 1.00 [25.4] MINIMUM  
 MEASURED IN INCHES

OPTION SPECIFICATION

- DXX: DAISY CHAIN -DOUBLE (SEE FIG 2, STH 2) (NOT AVAILABLE WITH -IDSS)
- PXX: POLARIZED MATING (SEE FIG 3, STH 2)
- ST"X": STRIPPED & TINNED (SEE FIG 4, STH 2)
- R: REVERSED CONECTOR (SEE FIG 5, STH 2) (NOT AVAILABLE WITH -M & -O)
- M: MIDDLE REVERSED (SEE FIG 7, STH 3) (NOT AVAILABLE WITH -R & -O) (REQUIRES -SXX, -WXX OR -DXX)
- O: OUTSIDE REVERSED (SEE FIG 8, STH 3) (NOT AVAILABLE WITH -R & -M) (REQUIRES -SXX, -WXX OR -DXX)
- RW: REVERSED WIRING (SEE FIG 9, STH 3)
- BXX: BREAKOUT (SEE FIG 6, STH 2)
- SXX: DAISY CHAIN -SINGLE (SEE FIG 10, STH 3)
- WXX: WIRING REVERSED (SEE FIG 11, STH 3)

OPTION SPECIFICATION

- T: TIN BOTH ENDS (USE C-10-T)
- LEAVE BLANK FOR GOLD PLATING.
- G: GRAY CABLE (SEE FIG 1) SUBSTITUTE GRAY CABLE FOR STANDARD COLOR CODED CABLE. USE: IDSD: CB-XX-28-7/36-050-G IDSS: CB-XX-28-7/36-100-G (NOTE: USE GRAY CABLE FOR DOUBLE ROW -31 THRU -36 POSITION)

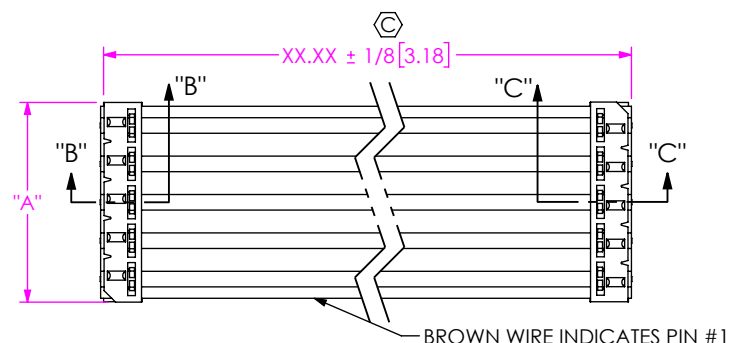
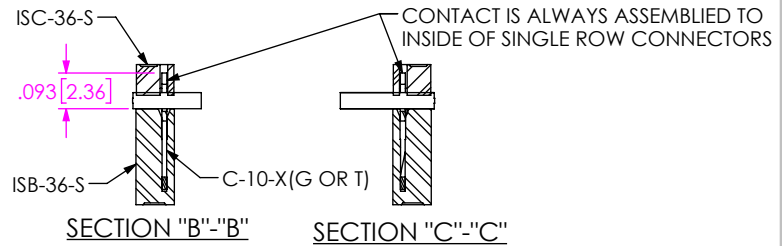


FIG 2  
IDSS-05-S-XX.XX-XXX-XXX SHOWN  
(DIFFERENT AS SHOWN, OTHERWISE SAME AS FIG 1)



SECTION "B"-"B"

SECTION "C"-"C"

POSITION	"D"
2, 3, 4	.360+.005/-0.000 [9.14+0.13/-0.00]
5 THRU 36	.365+.010/-0.005 [9.27+0.25/-0.13]

NOTES:

1. Ⓢ REPRESENTS A CRITICAL DIMENSION.
2. OPTION -SXX WHEN MATING DOUBLE ROW CONNECTOR WITH 2 SINGLE ROW CONNECTORS, THE OUTER MOST SINGLE WILL BE CONNECTED TO CONDUCTOR #1 AND THE INSIDE SINGLE TO CONDUCTOR #2.
3. USING A #32 MICRO FINISHED .025 ± .0005 [.64 ± 0.13] SQ POST, INSERTION / WITHDRAWAL FORCES TO BE:  
 INSERTION: 4.0 OZ [114 GRAMS] AVG / 6.0 OZ [170 GRAMS] MAX  
 WITHDRAWAL: 2.75 OZ [78.0 GRAMS] AVG / 2.0 OZ [57 GRAMS] MIN.
4. MAX ALLOWABLE BOW AFTER ASSEMBLY TO BE .006 INCH/INCH [MM/MM].
5. A CHAMFER ON THE END OF THE CAP IS GUARANTEED ON FINAL ASSEMBLIES THAT ARE AT LEAST 18 POSITIONS FOR MALE AND FEMALE TERMINATION.
6. ALL ASSEMBLIES TO BE 100% ELECTRICALLY TESTED FOR SHORTS AND OPENS.
7. ALL ASSEMBLIES TO BE 100% HI-POT TESTED AT 1000V.
8. WIRE: 28 AWG, 7/36, TINNED, STRANDED WITH PVC INSULATOR
9. FOR IDSX WITH R OR RW OPTION, CABLE RIB ORIENTATION CAN BE EITHER TOWARDS OR AWAY FROM THE CAP.
10. WHEN CUTTING CABLE TO LENGTH, CONDUCTORS SHOULD NOT EXTEND PAST THE CABLE INSULATION, EXTENDING LESS THAN 25% OF CABLE THICKNESS ON CONSECUTIVE AND LESS THAN 50% OF CABLE THICKNESS ON NON-CONSECUTIVE STRANDS IS CONSIDERED A PROCESS INDICATOR.
11. -STX TO BE SKIN PACKAGED PER THE PACKAGING MANUAL.

UNLESS OTHERWISE SPECIFIED, DIMENSIONS ARE IN INCHES.  
 TOLERANCES ARE:  
 DECIMALS ANGLES  
 .XX: ±.01 [0.3] 2°  
 .XXX: ±.005 [0.13]  
 .XXXX: ±.0020 [0.051]

PROPRIETARY NOTE  
 THIS DOCUMENT CONTAINS CONFIDENTIAL AND PROPRIETARY INFORMATION AND ALL DESIGN, MANUFACTURING, REPRODUCTION, USE, PATENT RIGHTS AND SALES RIGHTS ARE EXPRESSLY RESERVED BY SAMTEC, INC. THIS DOCUMENT SHALL NOT BE DISCLOSED, IN WHOLE OR PART, TO ANY UNAUTHORIZED PERSON OR ENTITY NOR REPRODUCED, TRANSFERRED OR INCORPORATED IN ANY OTHER PROJECT IN ANY MANNER WITHOUT THE EXPRESS WRITTEN CONSENT OF SAMTEC, INC.



520 PARK EAST BLVD, NEW ALBANY, IN 47150  
 PHONE: 812-944-6733 FAX: 812-948-5047  
 e-Mail: info@SAMTEC.com code 55322

MATERIAL: DO NOT SCALE DRAWING SHEET SCALE: 2:1  
 INSULATOR: PBT UL94V-0, COLOR: BLACK  
 CONTACT: BeCu  
 WIRE: 28 AWG, 7/28, TINNED, STRANDED WITH COLOR-CODED OR GRAY PVC INSULATOR

DESCRIPTION:  
 ASSEMBLY INSULATION DISPLACEMENT SOCKET CONNECTOR  
 DWG. NO.  
**IDSX-XX-X-XX.XX-XXX-XXX**

REVISION AE

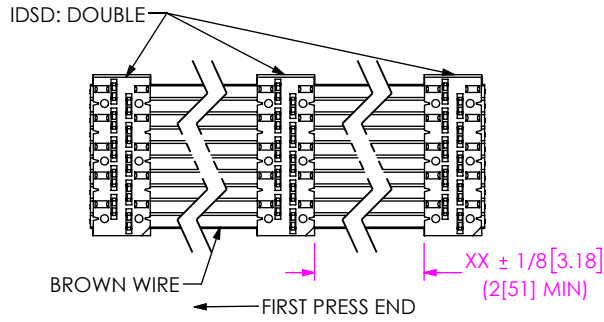


FIG 2  
-DXX SHOWN  
(NOT AVAILABLE WITH -DSS)  
(DIFFERENT AS SHOWN, OTHERWISE SAME AS FIG 1)

- NOTES:  
1. 2" MINIMUM LENGTH  
2. 1" INCREMENTS ONLY

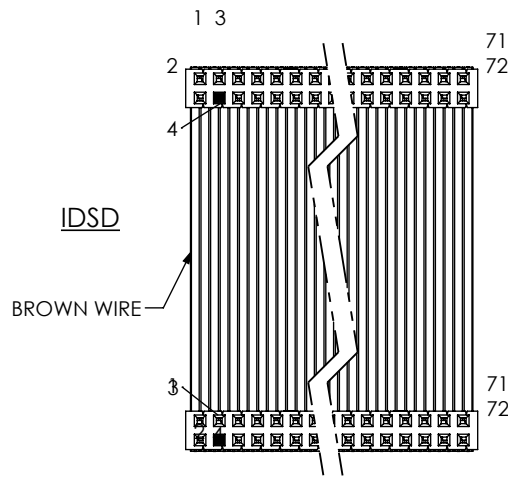


FIG 3  
-PXX: POLARIZED MATING SHOWN  
(XX = POSITION NO.)  
(INSERT POLARIZING KEY PART NO.  
PK-06 INTO SPECIFIED POSITION -XX)  
(DIFFERENT AS SHOWN, OTHERWISE SAME AS FIG 1)

- NOTE:  
1. POLARIZED POSITION WILL HAVE SAME ELECTRICAL POSITION FROM BROWN WIRE.

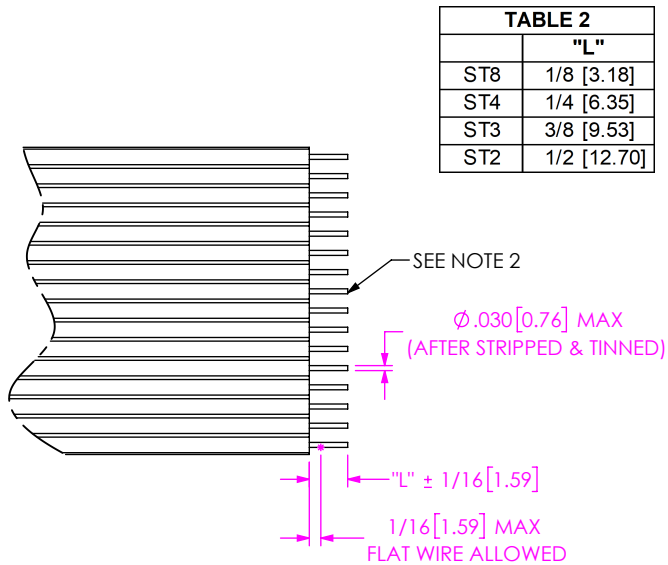
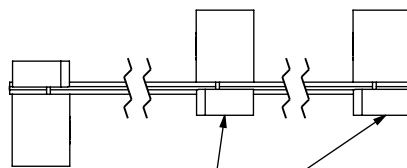
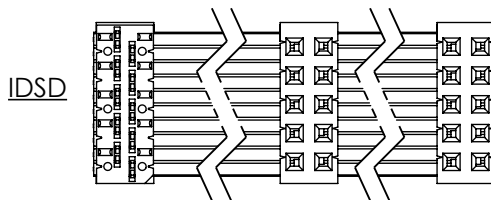
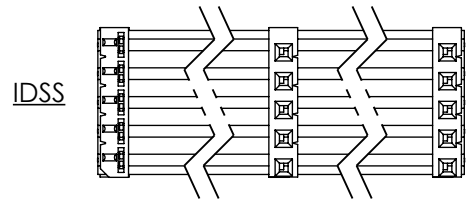


FIG 4  
-ST"X" SHOWN  
(DIFFERENT AS SHOWN, OTHERWISE SAME AS FIG 1)  
(SEE NOTE 11)

- NOTES:  
1. CONDUCTORS SHALL BE CONSISTENT IN APPEARANCE. SOLDER MUST MAINTAIN CABLE STRAINS WITHIN THE MAX DIA. TOLERANCE.  
2. USE LEAD FREE SOLDER ONLY.  
3. NOT AVAILABLE IN 28 POSITION AND UP IN DOUBLE ROW ONLY.



BOTH SOCKETS REV.  
WHEN DAISY CHAINED

FIG 5  
-R: REVERSED CONNECTOR SHOWN  
(NOT AVAILABLE WITH -M & -O)  
(DIFFERENT AS SHOWN, OTHERWISE SAME AS FIG 1)

c:\enterprise\ault\DWG\MISC\MKTG\IDSX-XX-X-XX-XX-XXX-XXX-MKT.SLDDRW

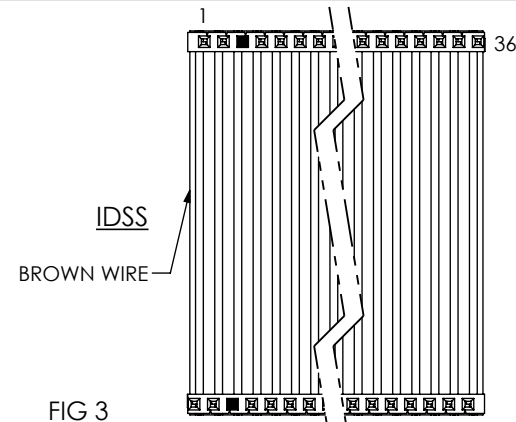


FIG 6  
-BXX: BREAKOUT SHOWN  
(DIFFERENT AS SHOWN, OTHERWISE SAME AS FIG 1)  
FOR IDSD -BXX OPTION, NO. OF CONDUCTORS MUST BE AN EVEN NUMBER

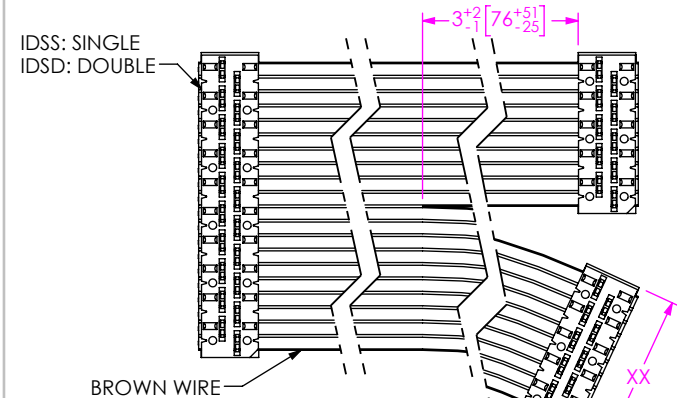


FIG 6  
-BXX: BREAKOUT SHOWN  
(DIFFERENT AS SHOWN, OTHERWISE SAME AS FIG 1)  
FOR IDSD -BXX OPTION, NO. OF CONDUCTORS MUST BE AN EVEN NUMBER

IDSD-XX-D-XX-BXX  
XX INDICATES NO. OF CONDUCTORS, OR POSITIONS X 2  
IDSD-XX-S-XX-BXX  
XX INDICATES NO. OF CONDUCTORS, OR POSITIONS X 2  
IDSS-XX-D-XX-BXX:  
XX INDICATES NO. OF POSITIONS  
IDSS-XX-S-XX-BXX:  
XX INDICATES NO. OF POSITIONS

PROPRIETARY NOTE  
THIS DOCUMENT CONTAINS CONFIDENTIAL AND PROPRIETARY INFORMATION AND ALL DESIGN, MANUFACTURING, REPRODUCTION, USE, PATENT RIGHTS AND SALES RIGHTS ARE EXPRESSLY RESERVED BY SAMTEC, INC. THIS DOCUMENT SHALL NOT BE DISCLOSED, IN WHOLE OR PART, TO ANY UNAUTHORIZED PERSON OR ENTITY NOR REPRODUCED, TRANSFERRED OR INCORPORATED IN ANY OTHER PROJECT IN ANY MANNER WITHOUT THE EXPRESS WRITTEN CONSENT OF SAMTEC, INC.



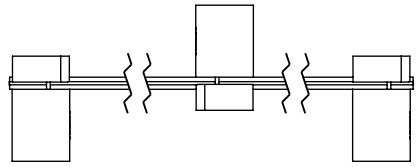
520 PARK EAST BLVD, NEW ALBANY, IN 47150  
PHONE: 812-944-6733 FAX: 812-948-5047  
e-Mail info@SAMTEC.com code 55322

DO NOT SCALE DRAWING  
SHEET SCALE: 2:1

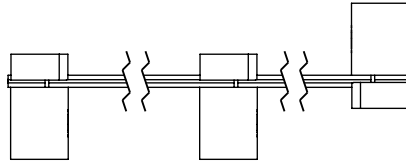
DESCRIPTION:  
ASSEMBLY INSULATION DISPLACEMENT SOCKET CONNECTOR

DWG. NO.  
IDSX-XX-X-XX.XX-XXX-XXX

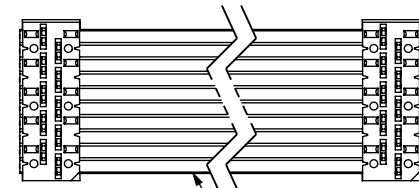
BY: DEAN P 11/02/1988 SHEET 2 OF 3



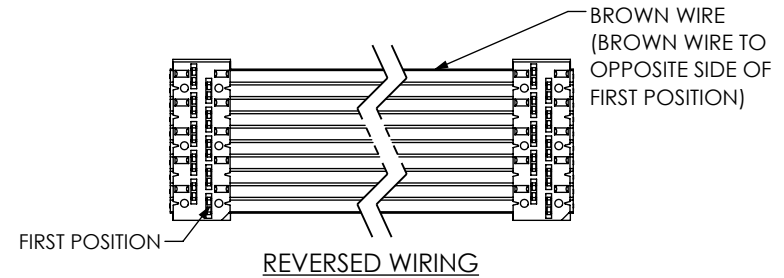
**FIG 7**  
 -M: MIDDLE REVERSED SHOWN  
 (NOT AVAILABLE WITH -R & -O)  
 (REQUIRES -SXX, -WXX OR -DXX)  
 (DIFFERENT AS SHOWN, OTHERWISE SAME AS FIG 1)



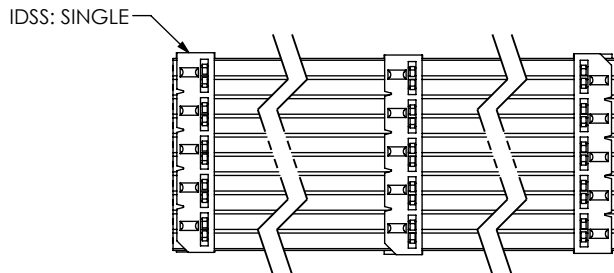
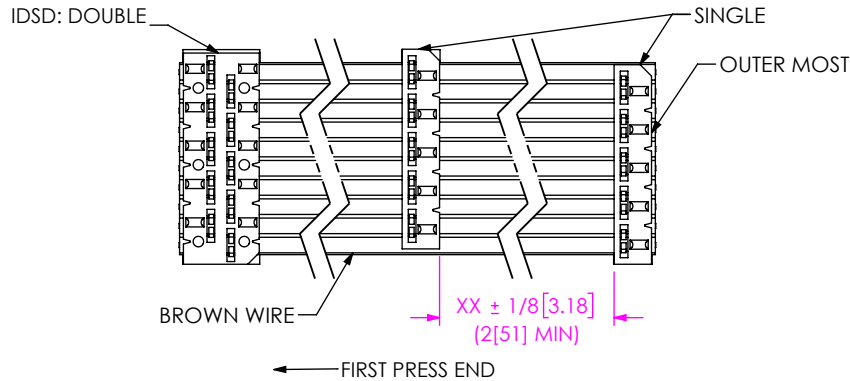
**FIG 8**  
 -O: OUTSIDE REVERSED SHOWN  
 (NOT AVAILABLE WITH -R & -M)  
 (REQUIRES -SXX, -WXX OR -DXX)  
 (DIFFERENT AS SHOWN, OTHERWISE SAME AS FIG 1)



STANDARD WIRING

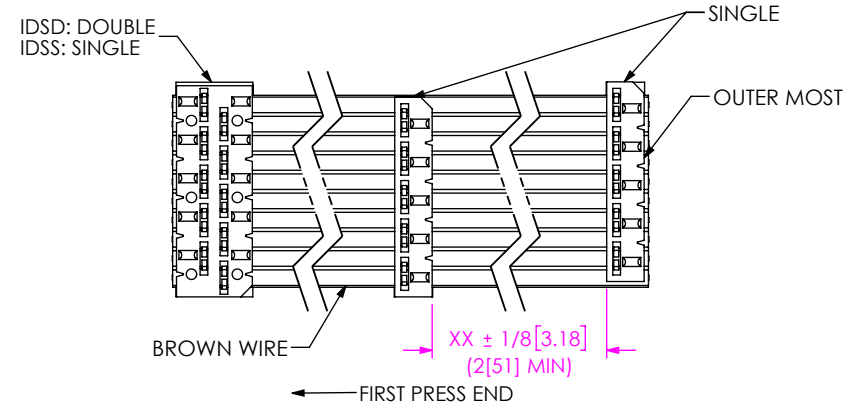


**FIG 9**  
 -RW: REVERSED WIRING SHOWN  
 (DIFFERENT AS SHOWN, OTHERWISE SAME AS FIG 1)



**FIG 10**  
 SXX: DAISY CHAIN - SINGLE SHOWN  
 (DIFFERENT AS SHOWN, OTHERWISE SAME AS FIG 1)

NOTE:  
 1. OPTION -SXX WHEN MATING DOUBLE ROW CONNECTOR WITH 2 SINGLE ROW CONNECTORS, THE OUTER MOST SINGLE WILL BE CONNECTED TO CONDUCTOR #1 AND THE INSIDE SINGLE TO CONDUCTOR #2.



**FIG 11**  
 -WXX: WIRING REVERSED SHOWN  
 (DIFFERENT AS SHOWN, OTHERWISE SAME AS FIG 1)

NOTE:  
 1. OPTION -SXX WHEN MATING DOUBLE ROW CONNECTOR WITH 2 SINGLE ROW CONNECTORS, THE OUTER MOST SINGLE WILL BE CONNECTED TO CONDUCTOR #2 AND THE INSIDE SINGLE TO CONDUCTOR #1.

**PROPRIETARY NOTE**  
 THIS DOCUMENT CONTAINS CONFIDENTIAL AND PROPRIETARY INFORMATION AND ALL DESIGN, MANUFACTURING, REPRODUCTION, USE, PATENT RIGHTS AND SALES RIGHTS ARE EXPRESSLY RESERVED BY SAMTEC, INC. THIS DOCUMENT SHALL NOT BE DISCLOSED, IN WHOLE OR PART, TO ANY UNAUTHORIZED PERSON OR ENTITY NOR REPRODUCED, TRANSFERRED OR INCORPORATED IN ANY OTHER PROJECT IN ANY MANNER WITHOUT THE EXPRESS WRITTEN CONSENT OF SAMTEC, INC.



520 PARK EAST BLVD, NEW ALBANY, IN 47150  
 PHONE: 812-944-6733 FAX: 812-948-5047  
 e-Mail: info@SAMTEC.com code 55322

DO NOT SCALE DRAWING  
 SHEET SCALE: 2:1

DESCRIPTION:  
 ASSEMBLY INSULATION DISPLACEMENT SOCKET CONNECTOR

DWG. NO.  
**IDSX-XX-X-XX.XX-XXX-XXX**

BY: DEAN P 11/02/1988 SHEET 3 OF 3